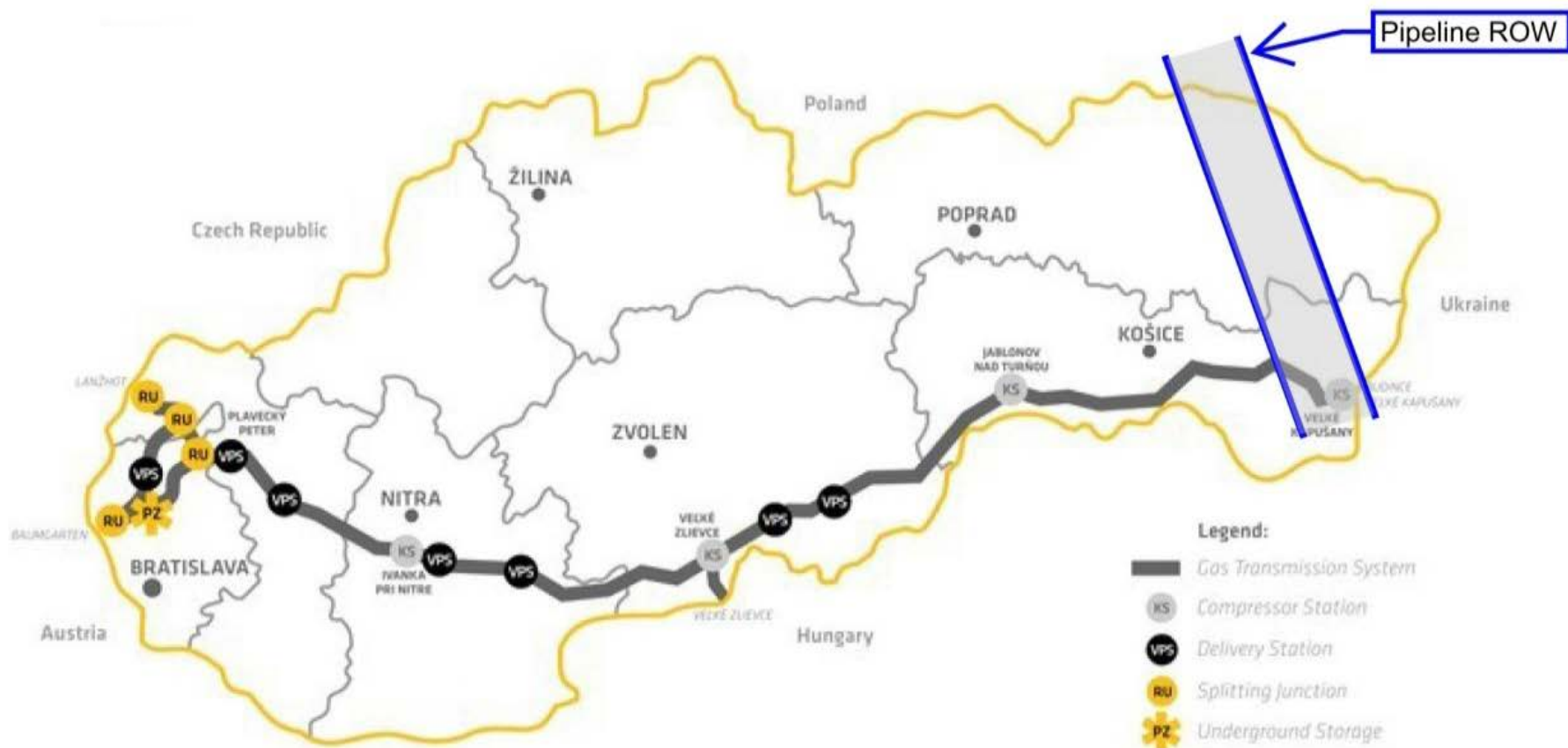


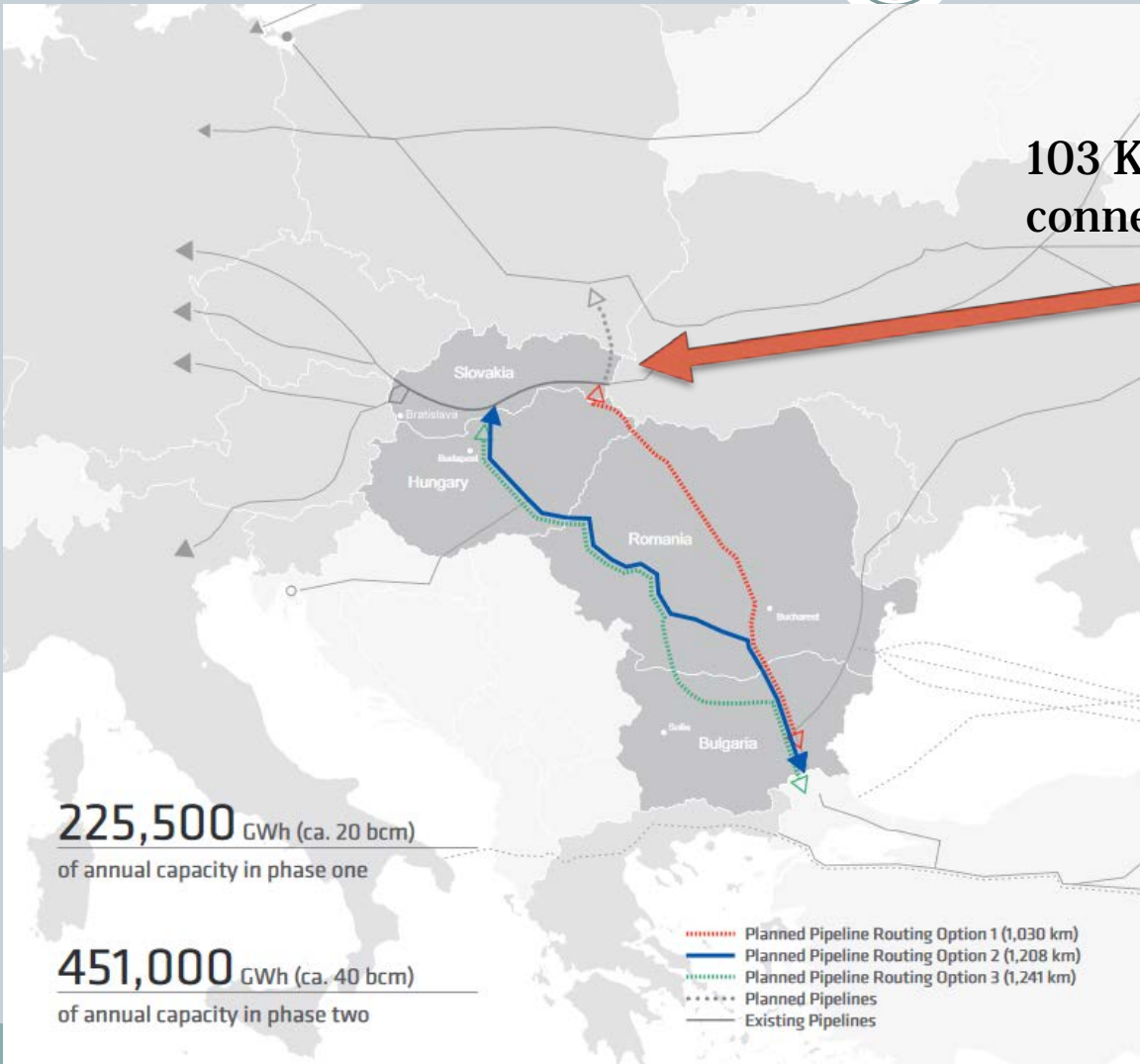
Cross-Connecting High Pressure Gas Pipeline Poland – Slovakia Project of common interest



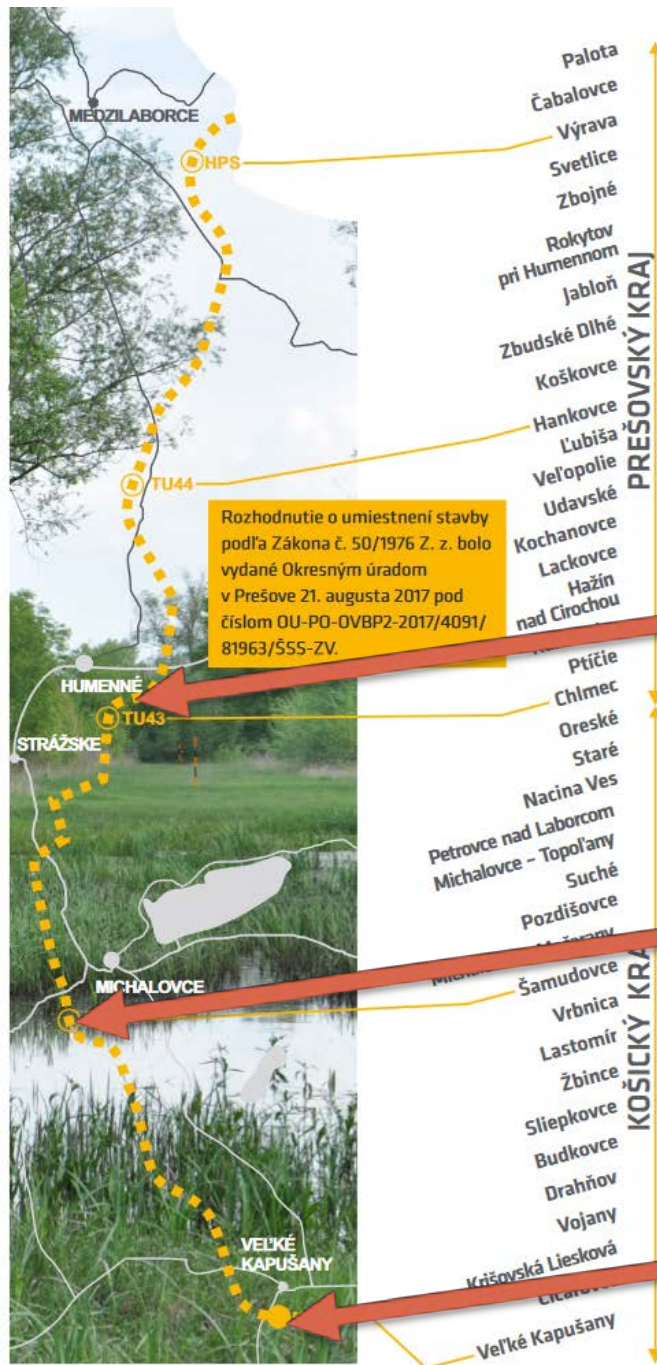
Project of common interest



103 Km high pressure gas pipe line connection Poland - Slovakia



Linial part nr.2

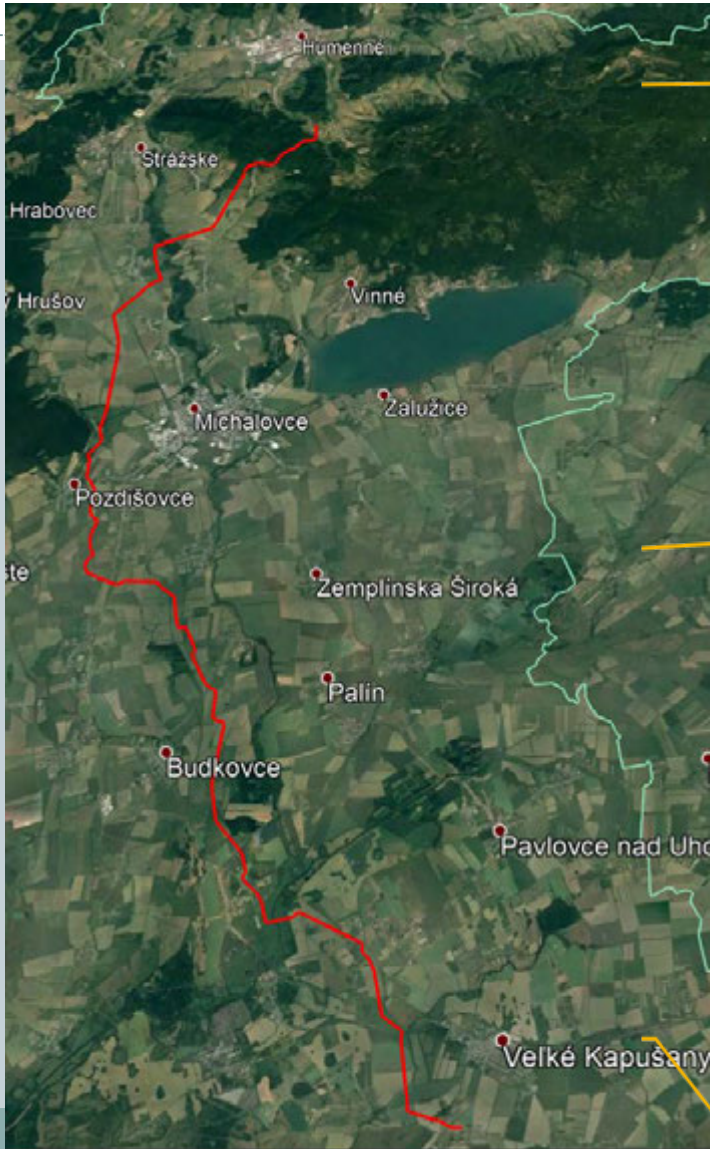


Km 52,50 – valve station Nr. 43

Km 28,00 – valve station Nr. 42

Km 0,00 – compressor station connection

Overview



Chlmec

- Oreské
- Staré
- Nacina Ves
- Petrovce nad Laborcom
- Michalovce - Topoľany
- Suché
- Pozdišovce
- Michalovce - Močarany
- Šamudovce
- Vrbnica
- Lastomír
- Žbince
- Sliepkovce
- Budkovce
- Drahňov
- Vojany
- Krišovská Liesková
- Čičarovce
- Veľké Kapušany

KOŠICKÝ KRAJ



Linial part nr.2
52.500 meter



Row start	KS01 Veľké Kapušany
Row end	state border Poland, kataster obce Palota
Total length	103 km
Part nr.2 length	52.5 km
Tender price part Nr.2	25,8 M€
Pipe diameter	DN 1000
Pipe material	steel L485ME
Max operating pressure	7.25 MPa(g) (KS01 V. Kapušany – HPS Výrava) 8,4 MPa(g) (HPS Výrava – štátna hranica, k.ú. Palota)
Capacity direction SK-PL	5,7 mld. Nm ³ /rok (pri 101,325 kPa a 0°C)
Capacity direction PL-SK	4,7 mld. Nm ³ /rok (pri 101,325 kPa a 0°C)

Pipe line basic data



- **Nominal pipe length: 6, 12, 18 meter**
- **Pipe used: coating: 3LPE, material steel: L485ME**
 - SAWL 1016 x 18,6
 - SAWL 1016 x 16,2
 - SAWL 1016 x 13,5
 - SAWH 1016 x 11,4
- **Pipes numbers: 3150 pcs**
- **Cold bends: 564 (391)**
- **Hot bends: 3**
- **Cathodic protection: 54 objects**
- **Optical cable: 53.700 meter**
- **Number of valve stations: 2**
- **Connection to compressor station: 1**
- **Number of crossings: 80**
- **HDD river crossing: 1**
- **Road and railway crossing: 13**



Milestones

- **June 2018** – contract signature
- **June – october 2019** – mobilisation
- **December 2019** – technical project documentation
- **12/2019 – 04/2019** – Right way preparation works
- **04 – 08/2019** – pipe delivering
- **06/2019** – welding works begining
- **04/2020** – welding works finishing
- **08/2020** – pressure test, and operational tests
- **10/2020** – take over

Forest crossing



Archeological survey



Access road



Valve DN 1000



Steel pipe IZHORA, DN 1016x18,6 length 12m



Steel pipe IZHORA, DN 1016x18,6 lenght 12m



Steel pipes, NOKSEL, DN 1016x11,4 lenght 18m



Steel pipes, NOKSEL, DN 1016x11,4 lenght 18m



Pipe stringing



Cleaning chamber DN 1000



Pipe distributing on line



09.05.2019 17:08

Stream crossign



Cold bends



Green project – environmental protection



the gas pipe line is located in bird and environmental protected area

